

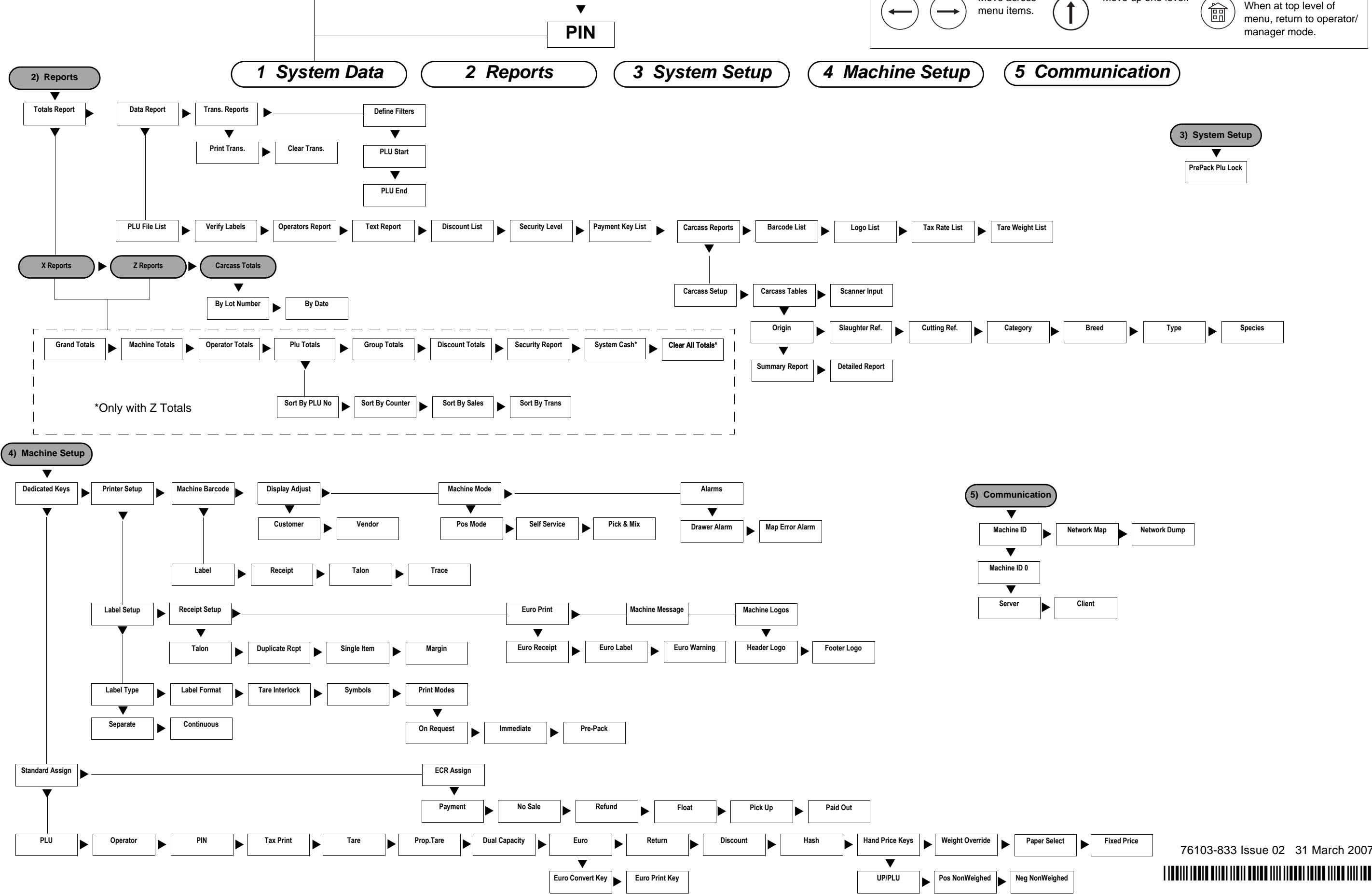
**Manager Mode**

**Set Up Mode\*\***

\*\*Only available if no operator security level set to 2.

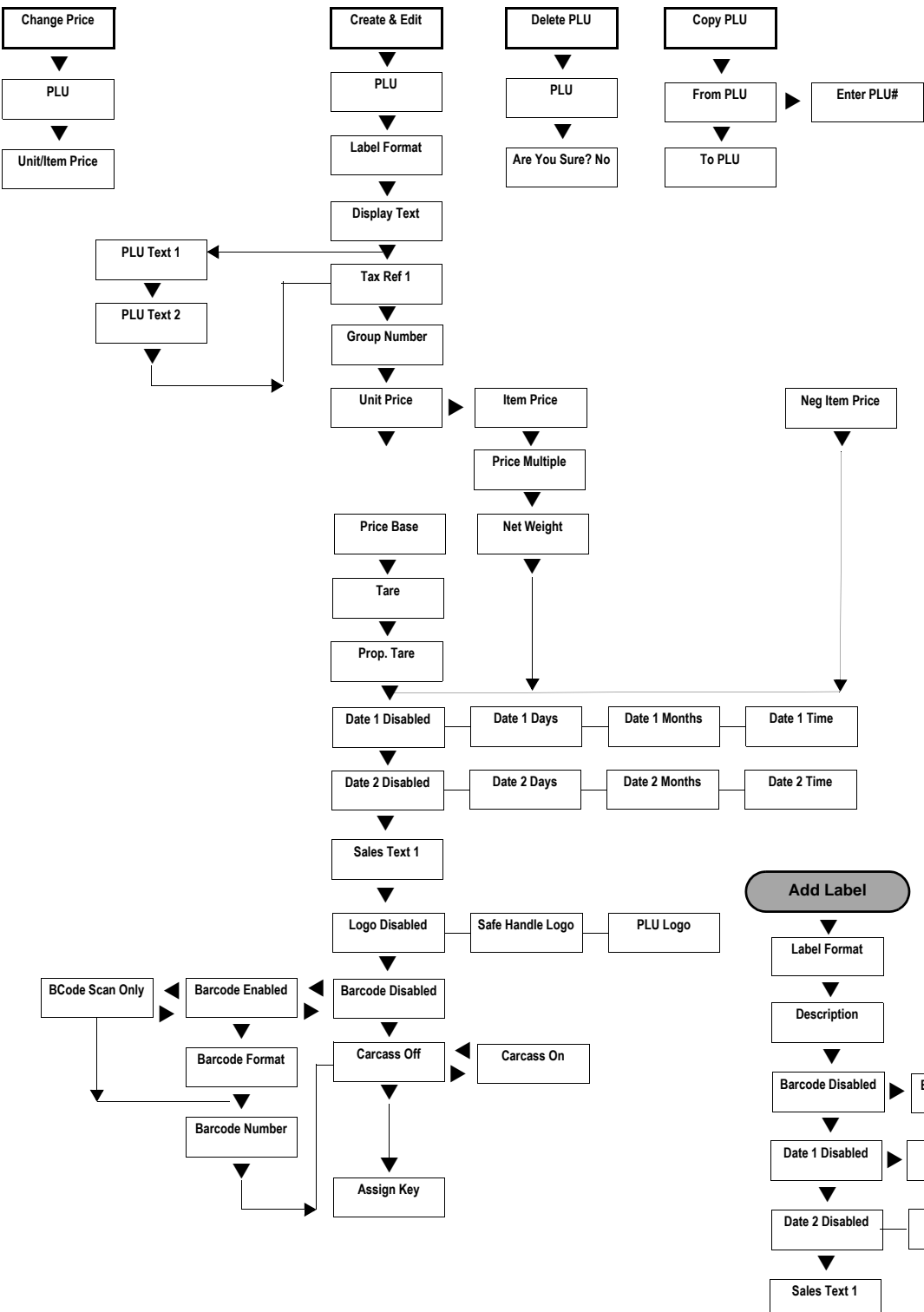
Security can be applied to these menus

ENTER Move to menu item below. Select menu item displayed  
ENTER Move to menu item above.  
← → Move across menu items.  
↑ Move up one level.  
🏠 Move to top level of menu. When at top level of menu, return to operator/manager mode.



**1 System Data**

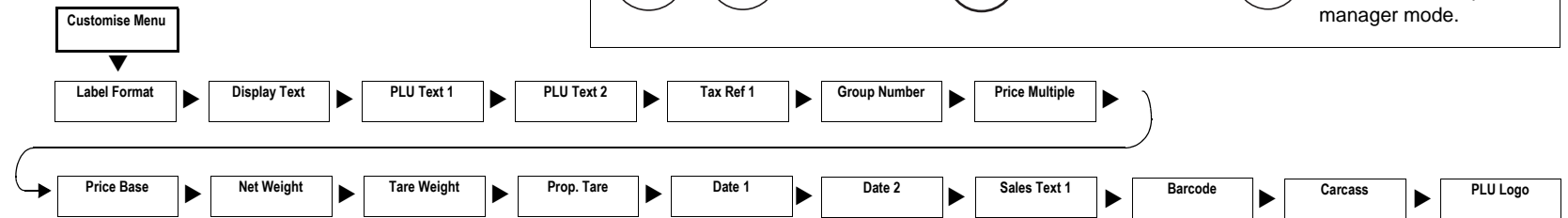
**Products**



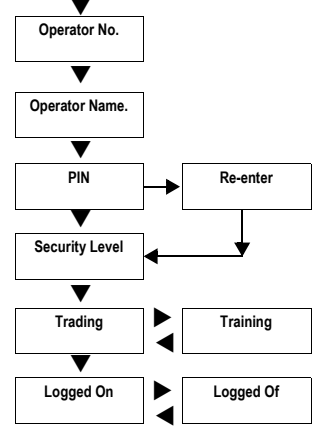
Security can be applied to these menus

Navigation controls:

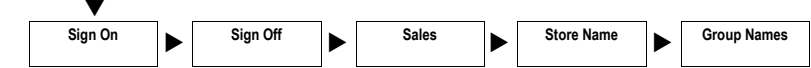
- ENTER** (down arrow): Move to menu item below. Select menu item displayed
- ENTER** (up arrow): Move to menu item above
- ←** (left arrow): Move across menu items.
- (right arrow): Move across menu items.
- ↑** (up arrow): Move up one level.
- Home icon**: Move to top level of menu. When at top level of menu, return to operator/manager mode.



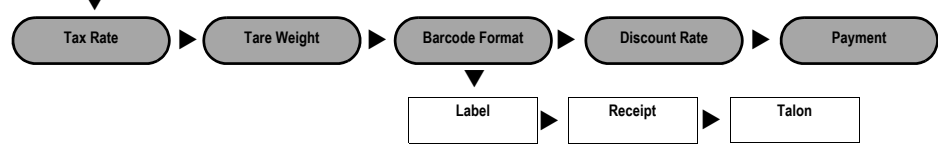
**Operators**



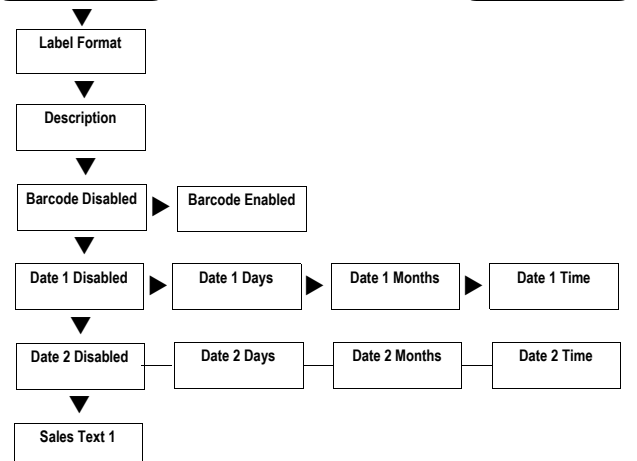
**Messages**



**Tables**

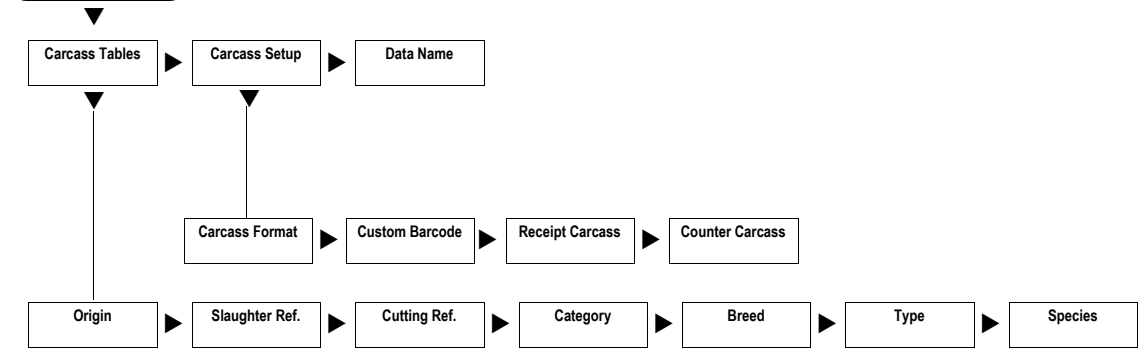


**Add Label**



**Date & Time**

**Carcass**



**Funct. Security**

